

A Journal of the Gesellschaft Deutscher Chemiker

Angewandte Chemie

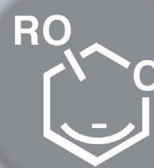
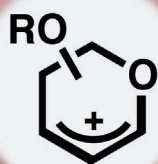
GDCh

International Edition

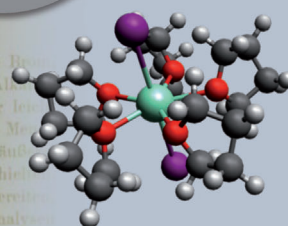
www.angewandte.org

2014–53/24

Lewis acid



SmI_2



Umpolung of Glycals

One hundred years ago ...

... while exploring the reductive metalation of “Acetobromoglucose” with zinc, Emil Fischer discovered the glycals. Since that time, these very useful unsaturated carbohydrates have been extensively used for the preparation of important complex carbohydrates and natural products following the natural electrophilic route. In their Communication on page 6184 ff., G. Doisneau, J.-M. Beau et al. reveal a new nucleophilic route by direct and selective umpolung using samarium diiodide.

WILEY-VCH